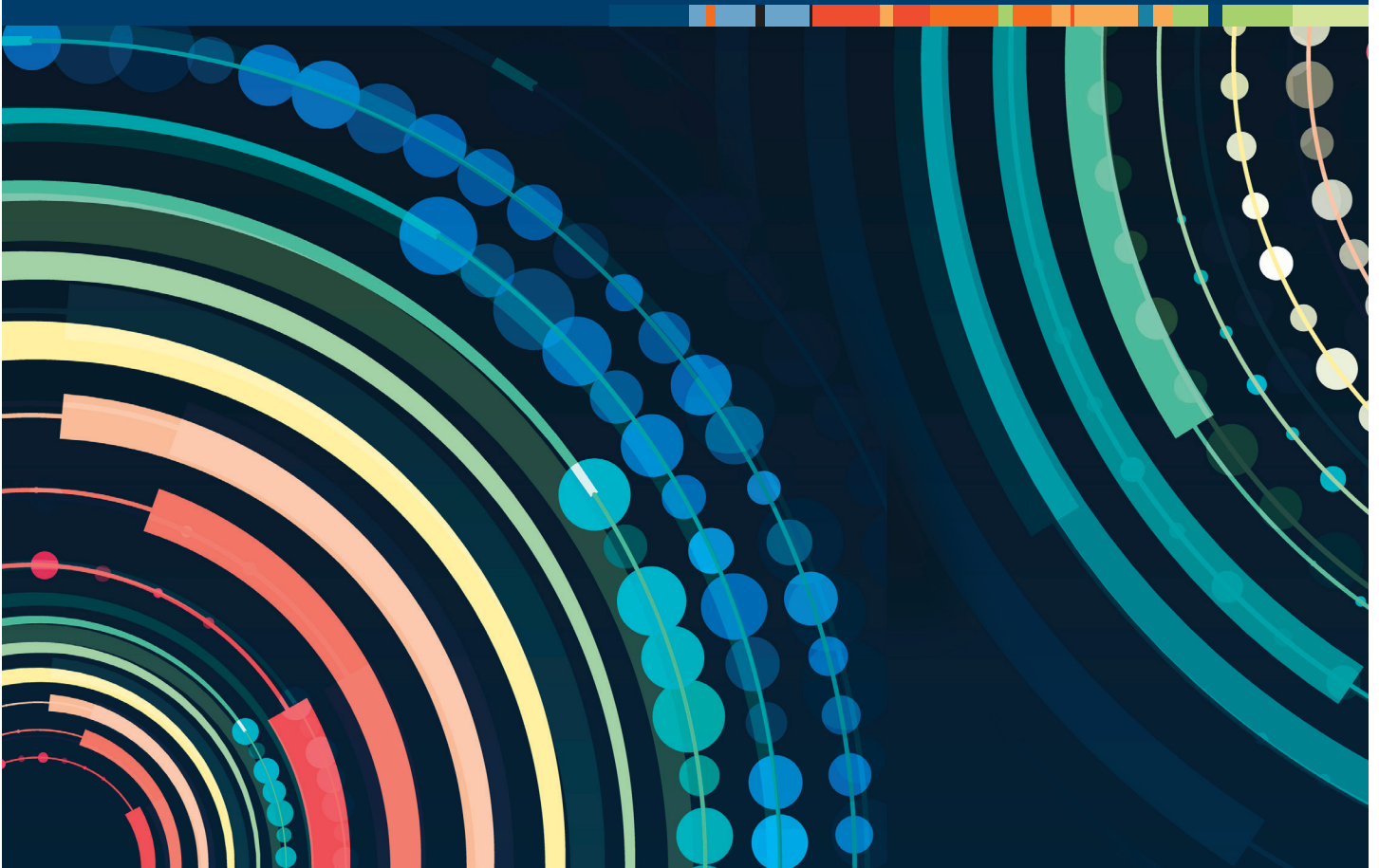
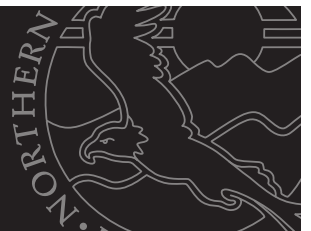


# FALL 2023 / FIRST OF TERM ENROLLMENT REPORT



Rishi Raj Poudyal / Carmella Sanchez  
(505) 747-2117 / (505) 747-2118  
[rishi.poudyal@nmmc.edu](mailto:rishi.poudyal@nmmc.edu) / [carmella@nmmc.edu](mailto:carmella@nmmc.edu)

Office of Institutional Research  
NORTHERN NEW MEXICO COLLEGE



## TABLE OF CONTENTS:

<b>Introduction</b>	<b>2</b>
<b>Table 1:</b> <i>Unduplicated Declared Majors per Academic Department</i>	<b>3</b>
<b>Table 2:</b> <i>Student Credit Hours (SCH) generated per Academic Department (16 and 1<sup>st</sup> 8-week courses)</i>	<b>3</b>
<b>Table 3:</b> <i>Types of Degrees (based on unduplicated enrollment)</i>	<b>4</b>
<b>Table 4:</b> <i>Gender Distribution (based on unduplicated enrollment)</i>	<b>4</b>
<b>Table 5:</b> <i>Financial Aid Statistics</i>	<b>5</b>
<b>Table 6:</b> <i>First-Generation Statistics</i>	<b>5</b>
<b>Table 7:</b> <i>Ethnic Distribution (based on unduplicated enrollment)</i>	<b>5</b>
<b>Table 8:</b> <i>Age Statistics and Distribution (based on unduplicated enrollment)</i>	<b>5</b>
<b>Graph 1:</b> <i>Distribution of Student’s Age</i>	<b>6</b>
<b>Table 9:</b> <i>Courses offered per Academic Department (16 and 1<sup>st</sup>8-week courses)</i>	<b>6</b>
<b>Table 10:</b> <i>Courses per Academic Department (16 and 1<sup>st</sup>8-week courses) by Division</i>	<b>7</b>
<b>Table 11:</b> <i>Low Enrolled Courses per Academic Department (16 and 1<sup>st</sup>8-week courses)</i>	<b>7</b>
<b>Table 12:</b> <i>Average Student Enrollment per Course by Academic Departments (16 and 1<sup>st</sup>8-week courses)</i>	<b>8</b>
<b>Table 13:</b> <i>Courses: Method of Instruction/Delivery (16 and 1<sup>st</sup>8-week courses)</i>	<b>8</b>
<b>Table 14:</b> <i>Courses: Method of Instruction/Delivery vs. Type of Faculty (16 and 1<sup>st</sup>8-week courses)</i>	<b>9</b>
<b>Table 15:</b> <i>Course Division (Lower or Upper) VS Faculty Type (16 and 1<sup>st</sup>8-week courses)</i>	<b>9</b>
<b>Table 16:</b> <i>Average Student Enrollment per Method of Delivery (16 and 1<sup>st</sup>8-week courses)</i>	<b>9</b>
<b>Table 17:</b> <i>Courses &amp; Student Credit Hours (SCH): Adjunct vs Full Time (16 and 1<sup>st</sup>8-week courses)</i>	<b>10</b>
<b>Table 18:</b> <i>Unduplicated Declared Majors by Field and Degree</i>	<b>10</b>
<b>Table 19:</b> <i>Unduplicated Majors Declared by Gender</i>	<b>11</b>
<b>Table 20:</b> <i>Unduplicated Declared Majors by Ethnicity</i>	<b>13</b>
<b>Graph 2:</b> <i>Distribution of SCHs enrolled by students</i>	<b>13</b>
<b>Table 21:</b> <i>Enrollment by Location (City)</i>	<b>14</b>
<b>Table 22:</b> <i>Enrollment by High School (First-Time Any College)</i>	<b>15</b>
<b>Table 23:</b> <i>Enrollment by High School (Dual Credit Students)</i>	<b>15</b>
<b>Graph 3:</b> <i>Students Enrollment by Distance (miles) Traveled to Campus</i>	<b>16</b>
<b>Table 24:</b> <i>Student Enrollment by Campus Location</i>	<b>17</b>

## INTRODUCTION

The Northern New Mexico College (NNMC) Enrollment Report is an analysis of the First-of-term **student enrollment data**. This document is compiled by the Office of Institutional Research in order to inform Academic Department Chairs primarily regarding the current semester student enrollment and course loads. It is intended for both planning and strategic decision-making. This report is prepared after each semester's Census (3rd Friday) and focuses on the first 8-week and 16-week enrollments. Three additional tables are added this year to the report. The “**Enrollment by High School (Dual Credit Students)**” table contains dual credit students’ enrollment from different high schools; the “**Course Division (Lower or Upper) VS Faculty Type**” contains lower and upper division course full-time and adjunct faculty; and the “**Students Enrollment by Campus Location**” contain student’s enrollment at different locations of NNMC. A new graph named “**Students Enrollment by Distance (miles) Traveled to Campus**”, is also added to provide the distances students travel to campus.

In the departmental tables, HPER (Health, Physical Education, and Recreation) is not an academic department but the courses are disaggregated in order to analyze these courses separately from the Academic Departments.

The data in this publication is compiled using the most recent enrollment files, course schedules, and faculty assignments data. All data is collected and maintained using Banner. The intent of this report is to provide an accurate and consistent reference for use by various internal and external stakeholders as well. This effort intends to provide quick and easy access to institutional data and open up new ideas and questions. If you have any questions or comments regarding this report, please feel free to contact us by email at [rishi.poudyal@nnmc.edu](mailto:rishi.poudyal@nnmc.edu) .

**Table 1:**  
*Unduplicated Declared Majors per Academic Department*

<b>Analysis of FTE</b>				
<b>Academic Departments</b>	<b>FTE (Fall 2023)</b>	<b>Head Counts (Fall 2023)</b>	<b>Head Counts (Spring 2023 EOT)</b>	<b>% of Declared Students (Fall 2023)</b>
Arts, Humanities and SS	85.9	108	99	9%
Biology, Chemistry, and ES	62.0	85	87	7%
Business Administration	227.6	271	215	22%
Education	80.9	129	119	10%
Engineering and Tech	56.2	68	58	6%
HPER	0.0	0	0	0%
Language & Letters	24.9	26	25	2%
Mathematics/Physics	2.2	2	3	0%
Nursing and HS	90.7	129	106	10%
Technical Trade	17.7	32	39	3%
Undeclared	68.6	221	135	18%
Undeclared Dual Credit	55.2	158	171	13%
<b>Total</b>	<b>771.9</b>	<b>1229</b>	<b>1057</b>	<b>100%</b>

Note: Unduplicated data consider only the primary major/degree that students have declared. FTE is calculated by dividing credit hours by 15 (Crhrs/15).

**Table 2:**  
*Student Credit Hours (SCH) generated per Academic Department  
 (16 and 1<sup>st</sup> 8-week courses)*

<b>Analysis Variable: Student Credit Hours</b>		
<b>Academic Departments</b>	<b>SCH</b>	<b>%SCH</b>
Arts, Humanities and SS	1528	18%
Biology, Chemistry, and ES	870	10%
Business Administration	1448	17%
Education	609	7%
Engineering and Tech	438	5%
HPER	30	0%
Language & Letters	928	11%

Analysis Variable: Student Credit Hours		
Academic Departments	SCH	%SCH
Mathematics/Physics	1241	14%
Nursing and HS	515	6%
Technical Trade	1092	13%
<b>Total</b>	8699	100%

Note: Here only unique CRN values were considered.

**Table 3:**  
*Types of Degrees (based on unduplicated enrollment)*

Degree	Number	Percent
Associate	296	24%
Bachelor	487	40%
Certificate	67	5%
Undeclared	221	18%
Undeclared Dual Credit	158	13%

**Table 4:**  
*Gender Distribution (based on unduplicated enrollment)*

Table of Academic Departments by Gender			
Academic Departments	Gender		
	F	M	Total
Arts, Humanities, and SS	70	38	108
Biology, Chemistry, and ES	51	34	85
Business Administration	189	81	271*
Education	112	17	129
Engineering and Tech	22	46	68
HPER	0	0	0
Language & Letters	16	10	26
Mathematics/Physics	0	2	2
Nursing and HS	116	13	129
Technical Trade	1	30	32*
Undeclared	35	185	221*
Undeclared Dual Credit	83	75	158
<b>Total</b>	695	531	1229*
<b>Percentage</b>	57%	43%	100%

Note \*3 students (1Business admin, 1 TechTrade, and 1Undeclared) responded neutral.

**Table 5:**  
*Financial Aid Statistics*

<b>Pell Eligible</b>
31% of total headcount
35% of Non-dual credit students

Note: Pell Eligible is determined only if they complete a FAFSA

**Table 6:**  
*First-Generation Statistics*

<b>First Generation (non-dual credit)</b>
32% first generation
25% Non-first generation
43% Unknown

Note: First-generation college student is defined as being the first person in the immediate family to attend college—i.e.: *neither parent has a college degree.*

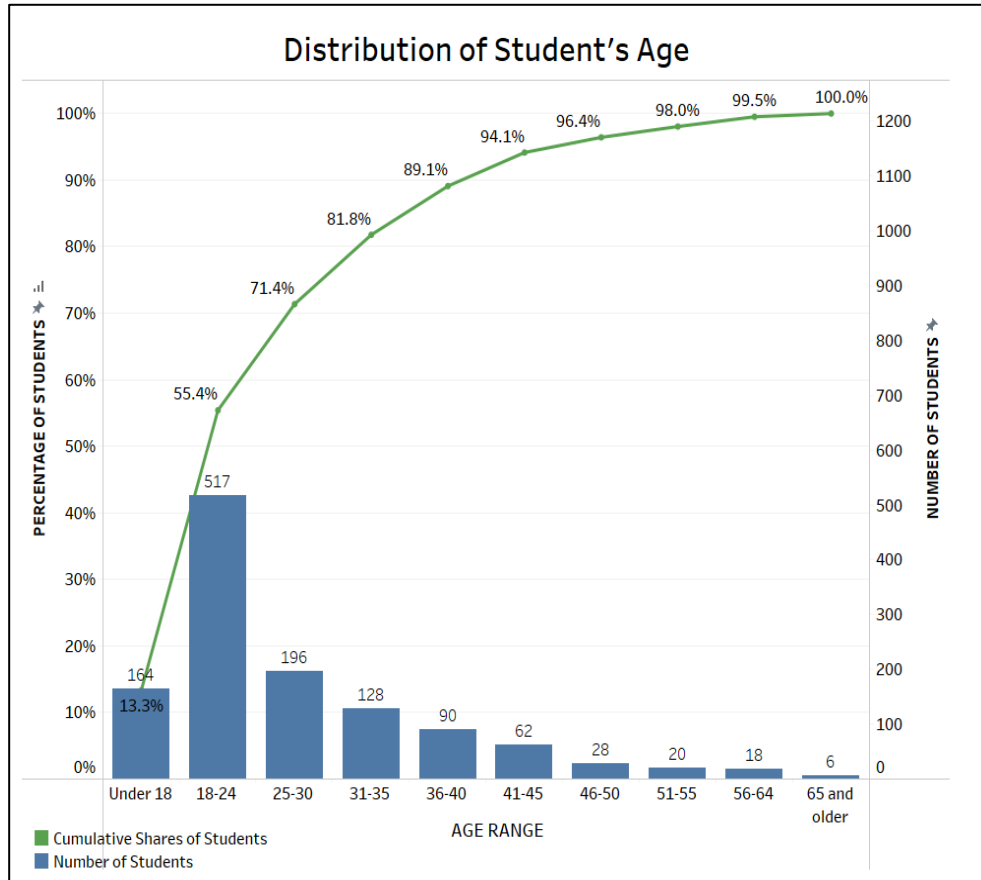
**Table 7:**  
*Ethnic Distribution (based on unduplicated enrollment)*

<b>Ethnicity</b>	<b>Number</b>	<b>Percent</b>
<b>American Indian or Alaskan Nat</b>	126	10.25%
<b>Asian</b>	18	1.46%
<b>Black or African American</b>	28	2.28%
<b>Hispanic of any race</b>	880	71.6%
<b>Native Hawaiian/Pacific Island</b>	0	0%
<b>White Non-Hispanic</b>	148	12.04%
<b>Non-Resident Alien</b>	6	0.49%
<b>Unknown / No Response</b>	23	1.87%
<b>Total</b>	1229	100.00%

**Table 8:**  
*Age Statistics and Distribution (Unduplicated enrollment)*

<b>Analysis Variable: AGE</b>			
<b>Minimum</b>	<b>Mean</b>	<b>Median</b>	<b>Maximum</b>
14	27	23	71

**Graph 1:**  
*Distribution of Student's Age*



Note: combo chart showing students' age distribution with cumulative percentage

**Table 9:**  
*Courses offered per Academic Department (16 and 1<sup>st</sup> 8-week courses)*

Academic Departments	# Courses offered	Percent
Arts, Humanities and SS	50	19.76%
Biology, Chemistry, and ES	42	16.60%
Business Administration	24	9.49%
Education	22	8.70%
Engineering and Tech	22	8.70%
HPER	4	1.58%
Language & Letters	19	7.51%
Mathematics/Physics	25	9.88%
Nursing and HS	19	7.51%
Technical Trade	26	10.28%
<b>Total</b>	<b>253</b>	<b>100.00%</b>

**Table 10:**  
*Courses per Academic Department (16 and 1<sup>st</sup> 8-week courses)*  
*by Division*

Academic Departments	Division		
	Lower	Upper	Total
Arts, Humanities and SS	34	16	50
Biology, Chemistry, and ES	28	14	42
Business Administration	16	8	24
Education	6	16	22
Engineering and Tech	13	9	22
HPER	4	0	4
Language & Letters	19	0	19
Mathematics/Physics	22	3	25
Nursing and HS	15	4	19
Technical Trade	26	0	26
<b>Total</b>	183	70	253
<b>Percentage</b>	72%	28%	100%

**Table 11:**  
*Low Enrolled Courses per Academic Department (16 and 1<sup>st</sup> 8-week courses)*

Analysis Variable: Enrollment		
Academic Departments	Low Enrolled Courses (n<10)	Percent Low Enrolled Courses (n<10)
Arts, Humanities and SS	30	60%
Biology, Chemistry, and ES	21	50%
Business Administration	11	46%
Education	8	36%
Engineering and Tech	19	86%
HPER	4	100%
Language & Letters	2	11%
Mathematics/Physics	6	24%
Nursing and HS	13	68%
Technical Trade	13	50%
<b>Total</b>	127	50%

Note: Percentages in this table are based on total numbers per Academic Department (**Note:** *Clinical Sessions and Capstone have a cap of 8 students*). Here, Unique CRN values were considered. (ECED 4479, 4480 and EDUC 4479 ,4480 have cap 6-8)



**Table 12:**

*Average Student Enrollment per Course by Academic Departments (16 and 1<sup>st</sup> 8-week courses)*

Academic Departments	Average Number of Students Lower Division	Average Number of Students Upper Division
Arts, Humanities and SS	12	7
Biology, Chemistry, ES	13	4
Business Administration	13	24
Education	15	9
Engineering and Tech	9	4
HPER	8	0
Language & Letters	16	0
Mathematics/Physics	16	5
Nursing and HS	11	6
Technical Trade	11	0
<b>Total</b>	13	8
<b>General Average</b>	11	

**Table 13:**

*Courses: Method of Instruction/Delivery (16 and 1<sup>st</sup> 8-week courses)*

Table of Academic Departments by Instruction Methods					
Academic Departments	Instruction Methods				
	BOL	BTR	OL/OLP	TR	Total
Arts, Humanities and SS	12	4	21	13	50
Biology, Chemistry, and ES	0	4	9	29	42
Business Administration	0	7	14	3	24
Education	0	0	13	9	22
Engineering and Tech	2	0	2	18	22
HPER	2	0	0	2	4
Language & Letters	6	4	4	5	19
Mathematics/Physics	13	4	1	7	25
Nursing and HS	0	0	4	15	19
Technical Trade	0	0	0	26	26
<b>Total</b>	35	23	68	127	253
<b>Percentage</b>	14%	9%	27%	50%	100%

Note: BOL means blended online, BTR means blended traditional, OL/OLP means online, and TR means traditional.

**Table 14:**

*Courses: Method of Instruction/Delivery vs. Type of Faculty (16 and 1<sup>st</sup> 8-week courses)*

Faculty Types	Instruction Methods				
	BOL	BTR	OL/OLP	TR	Total
Adjunct	20*	5	38	52.5*	115.5
Full time	15	18	30	74.5*	137.5
<b>Total</b>	35	23	68	127	253

Note: BOL means blended online, BTR means blended traditional, OL/OLP means online, and TR means traditional. If we consider unique faculty members, 45 are full-time and 66 are adjunct. \*The faculty who co-taught a course are treated as 0.5 in the calculation of Faculty Types.

**Table 15:**

*Course Division (Lower or Upper) VS Faculty Type (16 and 1<sup>st</sup> 8-week courses)*

Faculty Types	DIVISION		
	LOWER (1000 and 2000)	UPPER (3000 and 4000)	Total
Adjunct	97.5* (38.5%)	18* (7%)	115.5
Full-time	85.5* (34%)	52 (20.5%)	137.5
<b>Total</b>	183	70	253

Note: \*The faculty who co-taught a course are treated as 0.5 in the calculation

**Table 16:**

*Average Student Enrollment per Method of Delivery (16 and 1<sup>st</sup> 8-week courses)*

Instruction Methods	Mean
BOL	10
BTR	8
OL/OLP	16
TR	10

**Table 17:**

*Courses & Student Credit Hours (SCH): Adjunct vs. Full Time (16 and 1<sup>st</sup> 8-week courses)*

Academic Department	#Course by Adjunct	#Courses by Full Time	SCH offered by Adjunct	SCH offered by Full Time
Arts, Humanities and SS	28*	22	1083*	445
Biology, Chemistry, and ES	10	32	312	558
Business Administration	10	14	609	839
Education	11	11	402	207
Engineering and Tech	8	14	180	258
HPER	4	0	30	0
Language and Letters	13	6	652	276
Mathematics/Physics	12	13	757	484
Nursing and HS	6	13	100	415
Technical Trade	13.5*	12.5*	915.5*	176.5*
<b>Total</b>	115.5	137.5	5040.5	3658.5
<b>Percentage (%)</b>	46%	54%	58%	42%

Note: \*The faculty who co-taught a course are treated as 0.5 in the calculation of Faculty Types.

**Table 18:**

*Unduplicated Declared Majors by Field and Degree*

Majors	Degree			
	Associate	Bachelor	Certificate	Total
Nursing	0	83	0	83
Management	0	76	0	76
Business Administration	67	0	0	67
Project Management	0	55	9	64
Early Childhood Education	8	41	0	49
Elementary Education	7	33	0	40
Nursing (AND)	40	0	0	40
Psychology	0	38	0	38
Biology	9	22	0	31
Accounting	0	30	0	30
Electromechanical Engr Tech	0	29	0	29
Liberal Arts	26	0	0	26
Information Engineering and Tech	6	19	0	25
Criminal Justice	3	21	0	24
Environmental Science	5	19	0	24
Radiation Protection	23	0	0	23
Cosmetology	13	0	6	19
ALT Secondary (7-12)	0	0	16	16
Electrical Technology	12	0	4	16
ALT Special Education	0	0	14	14

Majors	Degree			
	Associate	Bachelor	Certificate	Total
Film and Digital Media Arts	14	0	0	14
Barbering	7	0	4	11
Self-Design	0	11	0	11
ALT Elementary (K-8)	0	0	10	10
Plumbing Apprenticeship	9	0	0	9
Humanities	0	7	0	7
Plumbing	6	0	1	7
Software Engineering	7	0	0	7
Allied Health	6	0	0	6
General Psychology	6	0	0	6
Pre-Engineering	6	0	0	6
Substance Abuse Counselor	6	0	0	6
Nuclear Operations Technology	4	0	0	4
Office Administration	3	0	0	3
Art	2	0	0	2
Mathematics	0	2	0	2
Radiation Control Technician	0	0	2	2
Chemistry	1	0	0	1
Entrepreneurship	0	0	1	1
Mechanical Engineering	0	1	0	1
Non-Degree	0	0	0	379
<b>Total</b>	<b>296</b>	<b>487</b>	<b>67</b>	<b>1229</b>

**Table 19:**  
*Unduplicated Majors Declared by Gender*

Majors	Gender		
	F	M	Total
ALT Elementary (K-8)	9	1	10
ALT Secondary (7-12)	7	9	16
ALT Special Education	14	0	14
Accounting	21	9	30
Allied Health	6	0	6
Art	1	1	2
Barbering	5	6	11
Biology	27	4	31
Business Administration	49	18	67
Chemistry	1	0	1
Cosmetology	17	1	19*
Criminal Justice	16	8	24
Early Childhood Education	48	1	49
Electrical Technology	1	14	16*
Electromechanical Engr Tech	10	19	29
Elementary Education	34	6	40
Entrepreneurship	0	1	1

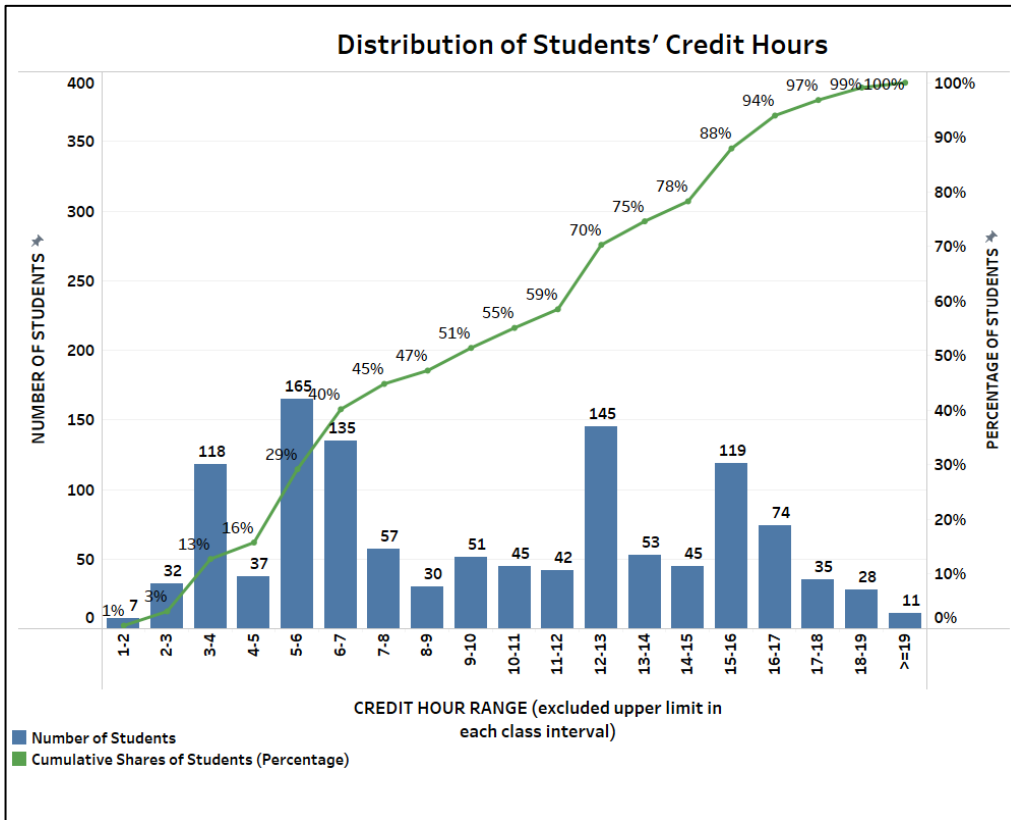
Majors	Gender		
	F	M	Total
Environmental Science	10	14	24
Film and Digital Media Arts	3	11	14
General Psychology	4	2	6
Humanities	5	2	7
Information Engineering Tech	8	17	25
Liberal Arts	16	10	26
Management	54	22	76
Mathematics	0	2	2
Mechanical Engineering	0	1	1
Nuclear Operations Technology	2	2	4
Nursing	75	8	83
Nursing (ADN)	35	5	40
Office Administration	2	1	3
Plumbing	0	7	7
Plumbing Apprenticeship	0	9	9
Pre-Engineering	1	5	6
Project Management	41	23	64
Psychology	32	6	38
Radiation Control Technician	1	1	2
Radiation Protection	10	13	23
Self-Design	6	5	11
Software Engineering	3	4	7
Substance Abuse Counselor	3	3	6
Non-Degree	118	260	379*
<b>Total</b>	695	531	1229

Note: \*One non-degree, one Cosmetology, and one Electrical Technology student responded neutral

**Table 20:**  
*Unduplicated Declared Majors by Ethnicity*

Majors	American Indian or Alaskan Nat	Asian	Black or African American	Hispanic of any race	Native Hawaiian/Pacific Island	Non-Resident Alien	Unknown / No Response	White non-Hispanic	Total
ALT Elementary(K-8)	2	1	0	3	0	0	0	4	10
ALT Secondary (7-12)	0	0	1	10	0	0	0	5	16
ALT Special Education	1	0	0	5	0	0	1	7	14
Accounting	7	0	0	21	0	0	0	2	30
Allied Health	0	0	0	6	0	0	0	0	6
Art	0	0	0	1	0	0	0	1	2
Barbering	0	0	0	10	0	0	0	1	11
Biology	2	0	0	22	0	0	0	7	31
Business Administration	10	0	4	51	0	0	0	2	67
Chemistry	0	0	0	1	0	0	0	0	1
Cosmetology	0	0	0	18	0	0	0	1	19
Criminal Justice	3	0	0	20	0	0	0	1	24
Early Childhood Education	11	0	2	31	0	0	0	5	49
Electrical Technology	1	0	0	11	0	0	1	3	16
Electromechanical Engr Tech	1	0	0	25	0	0	1	2	29
Elementary Education	4	3	0	28	0	0	0	5	40
Entrepreneurship	0	0	0	1	0	0	0	0	1
Environmental Science	4	0	0	17	0	0	0	3	24
Film and Digital Media Arts	5	0	1	8	0	0	0	0	14
General Psychology	3	0	0	1	0	1	0	1	6
Humanities	0	0	2	3	0	1	0	1	7
Information Engineering Tech	3	2	1	15	0	0	0	4	25
Liberal Arts	1	2	0	23	0	0	0	0	26
Management	5	1	3	57	0	0	3	7	76
Mathematics	0	0	0	2	0	0	0	0	2
Mechanical Engineering	0	0	0	1	0	0	0	0	1
Nuclear Operational Technology	0	0	0	4	0	0	0	0	4
Nursing	7	2	0	61	0	1	1	11	83
Nursing (ADN)	5	0	0	32	0	0	0	3	40
Office Administration	0	0	0	3	0	0	0	0	3
Plumbing	1	0	0	5	0	0	0	1	7
Plumbing Apprenticeship	0	0	0	6	0	0	1	2	9
Pre-Engineering	0	1	0	4	0	0	0	1	6
Project Management	6	0	0	52	0	2	1	3	64
Psychology	1	1	2	28	0	1	0	5	38
Radiation Control Technician	0	0	0	2	0	0	0	0	2
Radiation Protection	1	1	1	13	0	0	2	5	23
Self-Design	2	0	1	6	0	0	1	1	11
Software Engineering	1	0	0	6	0	0	0	0	7
Substance Abuse Counselor	0	0	0	5	0	0	0	1	6
Non-Degree	39	4	10	262	0	0	11	53	379
<b>Total</b>	<b>126</b>	<b>18</b>	<b>28</b>	<b>880</b>	<b>0</b>	<b>6</b>	<b>23</b>	<b>148</b>	<b>1229</b>

**Graph 2:**  
*Distribution of SCHs enrolled by students*



Note: Students who take between 12 and 18 credits are only charged tuition for the first 12 credits. Because of this distribution and the attendance of dual credit students, only **90%** of the SCHs generated are eligible for tuition. Employee tuition waivers decrease this number even further.

**Table 21:**  
*Enrollment by Location (City)*

City	Frequency	Percent
Espanola	297	24.19%
Albuquerque	121	9.85%
Santa Fe	107	8.71%
Santa Cruz	87	7.08%
Ohkay Owingeh	55	4.48%
Rio Rancho	45	3.66%
Alcalde	41	3.34%
Chimayo	34	2.77%
Los Alamos	32	2.61%
Fairview	26	2.12%
Hernandez	25	2.04%
Velarde	22	1.79%
Medanales	17	1.38%

City	Frequency	Percent
White Rock	17	1.38%
El Rito	16	1.30%
Abiquiu	15	1.22%
Ojo Caliente	15	1.22%
Dulce	14	1.14%
Los Lunas	12	1.00%

Note: Here only locations with 1% and more contributions were considered

**Table 22:**

*Enrollment by High School (First-Time Any College)*

High School	Percent
Espanola Valley High	24.56%
High School Equivalency Program	14.47%
Pojoaque High	6.14%
Albuquerque High	4.39%
Mesa Vista High	4.39%
McCurdy High	3.95%
Rio Rancho High	3.51%
Los Lunas High	3.07%
Albuquerque Academy	2.63%
Gallup High	1.75%
Santa Fe Indian School	1.75%
Texas	1.75%
Foreign High School	1.32%
Highland High	1.32%
Los Alamos High	1.32%

Note: This table shows enrollment of FTAC students by high school (only the first top 15 High Schools by enrollment were considered).

**Table 23:**

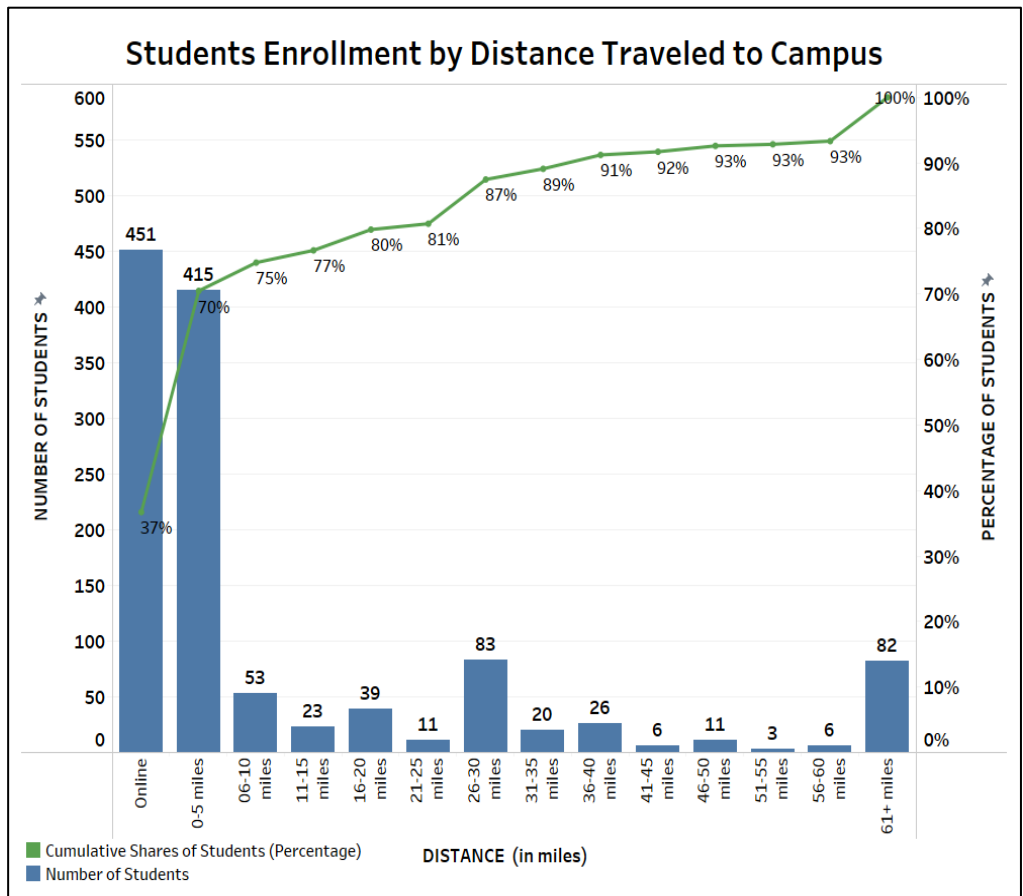
*Enrollment by High School (Dual Credit Students)*

High School	Count
Espanola Valley High	73
Coronado High School	19
McCurdy High	18
Mesa Vista High	18
Penasco Jr-Sr High	13
Walatowa Charter High School	6



High School	Count
Pojoaque High	4
NM Home Schools	2
NM Connections Academy	2
IOWA	1
Los Alamos High	1
NM School for the Arts	1
<b>Total</b>	<b>158</b>

**Graph 3:  
Students Enrollment by Distance (miles) Traveled to Campus**



Note: The combo chart shows the distance students traveled to campus and the cumulative percentage of students. Of students traveling from more than 50 miles, 23 are from Albuquerque.

**Table 24:**  
*Student enrollment by Campus Location*

<b>Location</b>	<b>Percent</b>
<b>Only Albuquerque</b>	13.6%
<b>Only El Rito</b>	0.5%
<b>Only Espanola</b>	78.5%
<b>Only Gallina</b>	1.1%
<b>Only Los Alamos</b>	2.8%
<b>Only Jemez Valley</b>	0.5%
<b>Both Espanola and El Rito</b>	2.8%
<b>Both Espanola and Gallina</b>	0.3%

**Note:** The total number of unduplicated students enrolled for PLAP courses is 201